





(Modern) Natural Resource Management at Nipissing First Nation



“Modern” Management



Natural Resource Management at Nipissing First Nation

Most Developed



Fisheries Assessment and
Regulation

Fisheries Enforcement

Species at Risk

Forestry

Wildlife

Least Developed



Fisheries Assessment and Regulation

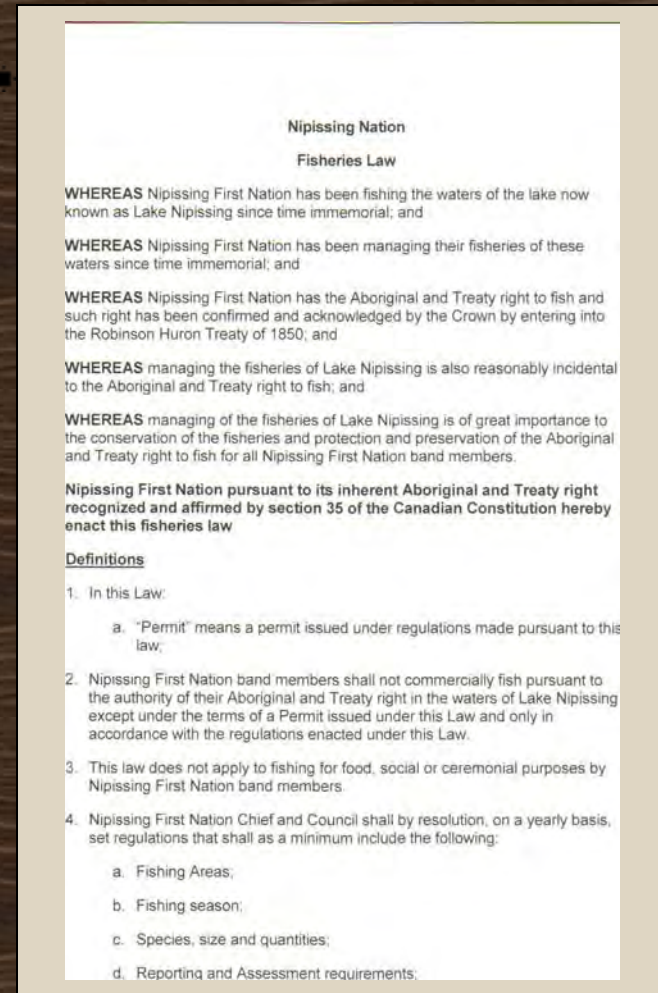


'Modern' Management began in 2004

✦ In July 2005, the Nipissing Council reviewed a new Fisheries Law to govern the commercial harvest on Lake Nipissing.

✦ On September 27, 2005 the people of Nipissing voted strongly in favour of this law.

✦ Formal modern management begins



NFN Assessment Projects Since 2004

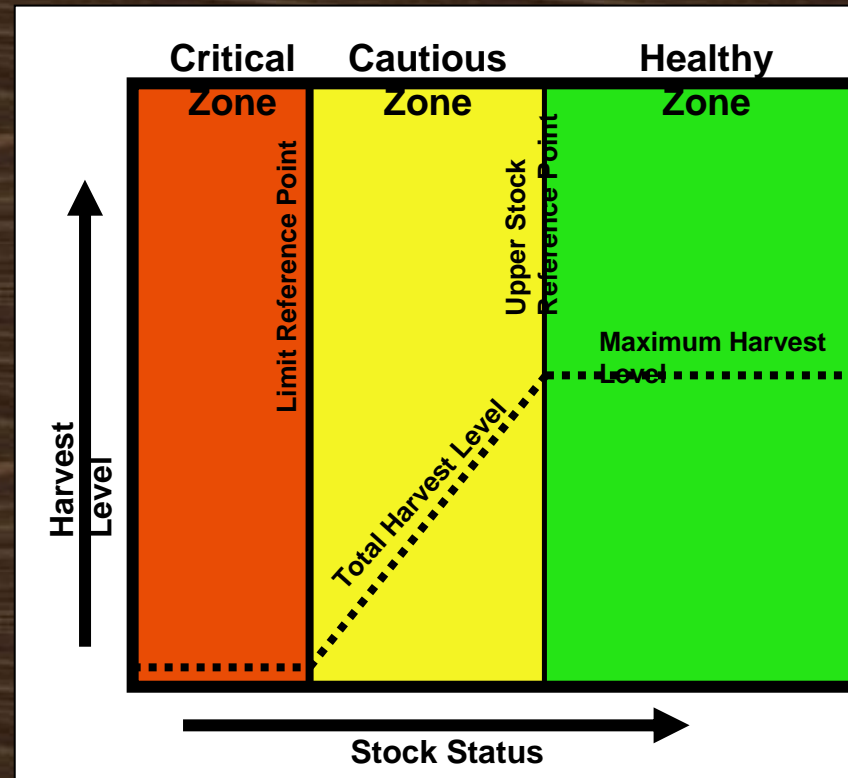
- ✦ Commercial Harvest Reporting 2006-present
- ✦ FWIN Assessment of walleye, yellow perch, sucker, herring, pike (w/ MNR partners) 2006 – present
- ✦ Trapnetting Assessment of northern pike, musky, smallmouth & largemouth bass:
 - northwest Lake Nipissing (2007)
 - southwest Lake Nipissing (2008)
 - West Bay (2009)
- ✦ Whitefish/Herring Assessment (w/ A/OFRC) (2004-5); 2011
- ✦ Ecosystem studies (smelt/spiny water flea/habitat/baitfish) ongoing
- ✦ Sturgeon Assessment 2008-2010



Effective Regulation: Sustainable Harvest Limit

✱ Biologically sound regulation based on Precautionary Principle (DCR-Quota system)

Total harvest can never exceed a 'safe level' that assures fish now and fish for the future



NFN Management efforts to protect spawning walleye

- ✦ Mesh size (minimizes kill of larger spawners)
- ✦ Moratorium (guarantee fish left to spawn)
- ✦ Quota (guarantee fish left to spawn)
- ✦ Reporting harvest (keeping track)

MISSISSIPPI Fisheries Department Daily Catch Form

Date set: 7/10/17 Time set: _____
Date lifted: 7/10/17 Time lifted: _____
Mesh size: 3 3/4 Depth set: 20
Catch sampled: Y-N Number of Panels: 3
Length of Panels in Feet: 1500'

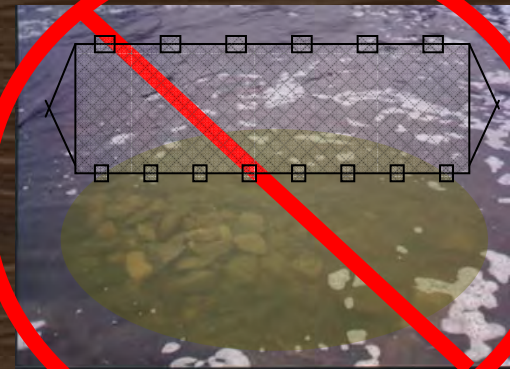
Species	# Harvested	Round Weight (lbs)	# Released
Walleye	32		
Yellow Perch	1		
Northern Pike	3		
Silver Bass	4		
Common Sucker	11		
Lake Herring	0		
Freshwater Drum	0		
Brown Bullhead	0		
Greater Redhorse	0		
Lake Whitefish	1		
Lake Sturgeon	1		1

Weather Conditions:
 Wind Rain Fog Other _____

Wind Direction:
 North East
 South West
 None

Wind Speed:
 0 - 10 km
 10 - 20 km
 20 - 30 km
 Other _____

Comments: _____



Fisheries Management Plan moving forward:



✦ **Fishery status - Quota - Seasons:**
reviewed annually
-quota reduced additional 10% for 2011;

✦ **Fishery Regulations:**
reviewed every 2-3 years
-spearing regulations in place for 2011;

✦ **Fisheries Assessment:**
annual investment > \$200,000 + funding
sources; prioritize & do what we can

Fisheries Enforcement

NFN wants full **COMPLIANCE** with fisheries regulations; many tools in place for this:

- ✦ **Incentives:**
Access to benefits for compliant fishermen (free flake ice, use of processing building, use of marketing label)
- ✦ **Certification Marketing Campaign:**
“Look for the Label”
- ✦ **Education:**
Why regulations are needed, effects they are having, future..
- ✦ **Community and Peer Pressure:**
not to be underestimated...

Enforcement is
required when all
else fails...



Fisheries Enforcement moving forward:

- ✦ Four NFN members now trained at “Level 1 Enforcement Officer” (efforts by local MNR) – still NOT peace officers; mentoring ongoing
- ✦ Anishinabek Police Service assistance throughout year when needed (“keep the peace”)
- ✦ All local police forces helping during moratorium
- ✦ NFN community demands stiffer penalties
- ✦ Restorative Justice System continues to develop



There is a lot
at stake...



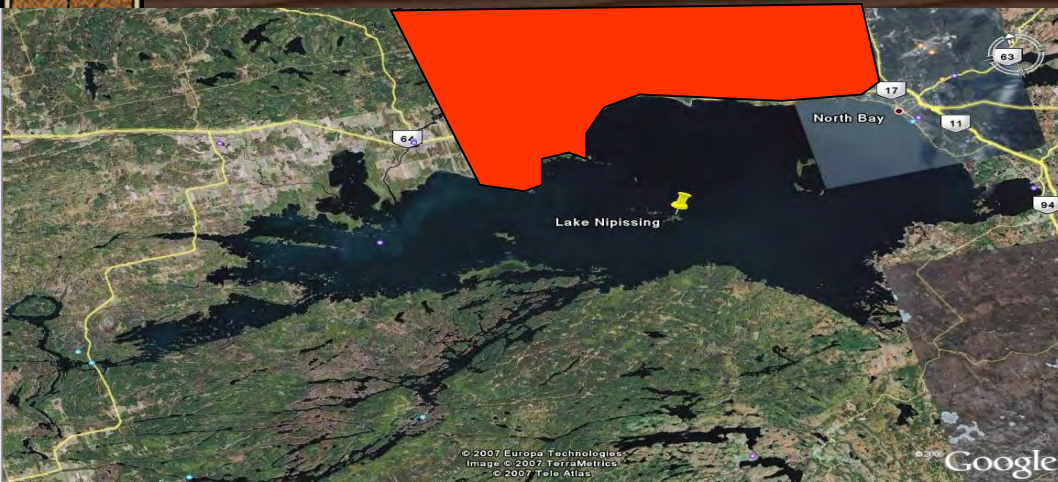
Forestry

- ✦ Operation of forestry company “Nbiising Forestry” on NFN and Crown land
- ✦ Many ups and downs in past decade
- ✦ Operations simplified; beginning to find a niche
- ✦ Major training initiative in 2009
- ✦ Capacity-building has contributed to two forestry businesses owned/operated by NFN members



Forestry Plan moving forward:

- ✦ Support NFN forestry businesses however possible;
- ✦ Develop Forest Management Plan for NFN Lands (FRI interpretation)
- ✦ Continue to build capacity...



Wildlife

✦ Biologist on staff (land use planning, education)

✦ Natural Resource Committee assembled – issues identified and discussed by community (policies)



Wildlife moving forward:

- ✦ Expectations that management capacities will continue to build; discussions will lead to policies



Species at Risk

